

the back bay beta

BETA THETA PI AT MIT | MAY 2012



WELCOME BACK! EFFORTS TO RESTART BETA UPSILON HAVE BEGUN

Welcome back to the *Back Bay Beta*. Although we haven't published in some time, we will now be back to a regular schedule of at least three issues per year, maybe more. Please send us your news so that we can keep one another up-to-date!

Our restart efforts are well underway. We have initial committees that are focused on fundraising, facilities, and alumni relations. Although many of you have stepped forward to help out, we can always use more volunteers, and there are many tasks that can be done from anywhere in the world. Volunteering for an hour or two a month is a helpful way to stay connected with all of our alumni. Please let me know if you would like to help out.

We recently completed MIT's Campus Preview Weekend, where admitted students explore the campus, many trying to make a final decision about where to attend college. We introduced ourselves to some of these students as we began networking around campus to raise Beta's profile and identify initial potential members.

The response from students and parents was very positive. Our colony development coordinator, Ryan Gee (Kettering '11), was

at CPW and organized our efforts. We also had great support from current undergraduate members of Beta's chapter at Northeastern. It's clear that Beta's message—which focused on academic achievement, integrity, and a balanced experience—will resonate well on campus. The next step for Ryan will be to move to Boston in June, living in the main house for the next year, and begin full-time networking and prospecting on campus.

We are developing detailed plans for our restart, and a significant portion of that involves facilities. Some have asked why we are keeping both houses, or if we have considered selling our houses to move to Cambridge, closer to campus. I can tell you that your alumni board has considered all of these options and believes that keeping both Boston houses is our best strategy.

First of all, the buildings themselves have great sentimental value to almost all of our members. We've owned the main house since 1946 and the annex since 1964. Most of our living alumni can't imagine a Beta Chapter without both of them. If we sold both facilities and moved to Cambridge, we would face several challenges:

- Potential loss of support from alumni

who feel disconnected from the new facilities. They would lose the chance to reminisce about their past exploits while walking through the facility. I see alumni do this every year when they return to Boston, and it's very gratifying to everyone.

- There is a shortage of good housing stock in Cambridge near campus. We would clearly face a downgrade in terms of facility character. We'd probably be in something that feels much more institutional and less like a home. Although we would shorten our students' commute to school, we would lose a lot of the character that makes Beta feel like Beta.
- Many alumni identify Beta as giving them some breathing room while in the high-stress environment of MIT. Moving onto campus would lose this key Beta benefit.

We did consider selling the annex and using the proceeds to finance improvements in the main house. The biggest challenge here is capacity. The main house is currently licensed to hold 20 residents while the annex, with less common space, holds

(CONTINUED ON PAGE TWO)

SAVE THE DATE FOR BETA'S 100TH ANNIVERSARY!

Brothers, update your calendars!

OCTOBER 4-6, 2013

Help us celebrate the 100th anniversary of the founding of the Beta Upsilon Chapter of Beta Theta Pi.

A notable milestone by any measure, this celebration will be all the more important as it coincides with the conclusion of the very first Rush Week in which our new founding fathers will participate. Attendees will therefore not only experience great friendship and unfaltering fidelity, but will also have the chance to meet a new generation of Betas—pledge and active alike—who will carry our brotherhood into the future.

Although we are still in the early stages of planning the event, activities will include:

- Tours of MIT and the Beta houses
- Organized tours of Boston landmarks
- A keynote banquet on Saturday, October 5, with a speaker (TBD)

Additionally, we are in need of volunteers! If you would like to help with organization or are interested in spreading the word about the 100th, please email me at vsinow22@gmail.com. Any bit of your time will be greatly appreciated!

~kai~
Victor Sinow '08
1097

RESTART EFFORTS HAVE BEGUN!

(CONTINUED FROM PAGE ONE)

25. If we only had the main house, we would certainly have half the chapter unable to reside in the house, while the rest were on campus. While this may work at other universities, there is no example of this working at MIT. A small chapter of 20 residents, including non-resident freshmen, probably doesn't have critical mass to succeed. We need to house at least 35 people to have a mid-40s-sized chapter, which was our historical success point. The larger fraternities at MIT have more than 60 members, and that is our target size. This will give us enough members to fill up both buildings with upperclass residents. In the interim, we have the option of continuing to rent extra rooms to MIT graduate students, ensuring our financial stability.

Some have asked about our ability to succeed with our houses a mile from campus. Although sometimes inconvenient, the benefits of being in the middle of Boston University—with its diverse student population, having some breathing room away from campus, and our convenient location near the Esplanade—outweighs the distance challenge. MIT now offers free shuttle service to and from the Bay State Road neighborhood, something most of us would have welcomed! We can be successful on Bay State Road as Lambda Chi Alpha (just a few doors down from us) is MIT's largest fraternity. They recently had a more-than-20-member pledge class, which is large enough to ensure our success if we can match them. MIT is fully supportive of the Boston fraternities, which helps us maintain good relationships with the various Boston licensing boards.

There is no challenge-free way to restart our chapter, but we believe that staying in our current facilities is the best path toward maintaining the most alumni support and giving us a unique, attractive offering for our new members. I welcome your comments on this or any other aspect of our restart. Contact me via email at mike_feinstein@yahoo.com; or by phone at (781) 454-5710.

Yours in ___kai___,
Mike Feinstein '82
753

BETA CHAPTER IS REVAMPING

The facilities committee has been laying the groundwork for a renovation project at the Beta house. Raul-David Poblano '01 heads the committee, with contributions from Herman Marshall '78, Bryan Morrissey '98, Drew Mutch '98, Aron Qasba '00, Brian DiVasta '95, and me. Other participants include Steven Russo '09, Terrence McKenna '07, and Craig Richards '83. Our first efforts have been in assessing the current state of the buildings and developing a list of renovation priorities. We have met at the properties and held conference calls to achieve these aims.

In February, a small group of us spent a couple of Saturdays looking at the physical condition of both houses. We started our survey in the main house's public spaces. The living room, chapter room, and dining room have mostly aged gracefully. Only minor work is needed to restore these rooms. However, some areas are of concern and need to be addressed in a more substantial renovation, including, the kitchen, butler's pantry, and bathrooms. The annex was reviewed on a subsequent weekend and found to be generally in much worse condition than the main house. The wear of the years has taken its toll. Many of the finishes and flooring need to be replaced. In addition, multiple renovations over the years have left a poorly laid out stair enclosure and inefficient corridor system.

The exteriors of the buildings were also examined. The windows and roofing have been replaced in recent years, but some minor masonry repair is needed, such as setting the annex stairs. Nonetheless, the exteriors of the houses are in pretty good shape. Finally, the parking areas behind both houses need to be repaved with consideration for bike storage.

With this assessment, the committee looked broadly at how to allocate potential renovation resources. We discussed adding new designated educational areas, such as lab or entrepreneurial space. We looked into adding an addition and roof decks. In the end, we concluded that the primary goal is to get the house functioning. This would entail renovating the basement of the main house,

fixing the bathrooms, and a general cleanup of the remaining spaces (painting, sanding floors, new light fixtures, etc). After this primary goal is achieved, the rest of the project budget would be dedicated to rehabilitating the annex. Clearly, the annex needs to be restored to a condition similar to that of the main house. In addition to these priorities, our recommendation is to complete the project in phases. The first phase would make the main house fully functional, while the second, larger phase would renovate the entire annex and could start after the completion of the main house.

With confidence in this direction of the renovation, the committee has identified several architects with the appropriate experience and made preliminary contact with them.

All of this groundwork will enable the board to make a decision about renovation priorities as part of the restart of the chapter. We welcome your feedback, as well as the involvement of additional volunteers who are interested in helping out.

Yours in ___kai___,
Neil Harrigan '90, AIA
839



the back bay beta

Published regularly by the Beta Upsilon Chapter of Beta Theta Pi at MIT. News, address changes, and photos are welcome and should be sent to Alumni Records Office, Beta Theta Pi at MIT, P.O. Box 390528, Cambridge, MA 02139-0006.

THE RESURGENCE OF BETA UPSILON

Brothers, as the restart effort for Beta Upsilon begins to accelerate, I thought it would be appropriate to provide quarterly updates in the *Back Bay Beta*. May this serve as the first in a series of similar articles outlining our current progress and providing a snapshot into future plans.

This summer will mark the official kick-off for recruitment of undergraduate members and advisers. The first order of business will be identifying, recruiting, and training a full advisory team to support the chapter's return. The five core positions that we will need to fill are: chapter counselor, financial adviser, risk-management adviser, recruitment adviser, and new member education adviser. Having these five advisers is a prerequisite for the chapter to receive its charter in the coming years. There are also auxiliary adviser roles available such as ritual adviser or scholarship adviser. My hope is to have a nice blend of MIT Betas,

non-MIT Betas, and friends of Beta on the team. If anyone is interested in advising an undergraduate member, please give me a call at (513) 593-7126, or shoot me an email (ryan.gee@betathetapi.org).

Summer will also be a critical time for networking with the campus. A bulk of the fall recruitment effort will be driven by referrals and recommendations. I will be spending some time meeting with professors, faculty, staff, and students to build support for Beta's return and seeing if they know individuals who may make great Betas. Having a strong candidate pool established before the rest of the expansion team arrives will ensure a more successful result.

I look forward to providing a more comprehensive update this summer after moving to Boston and beginning the bulk of my efforts on the restart.

Yours in _kai_,
Ryan Gee

ALUMNI, WE NEED YOUR SUPPORT TODAY

As we prepare for the relaunch of our Beta Upsilon Chapter, we haven't lost sight of our continuing operations. Our two facilities are fully rented to MIT graduate students. We have also hired a property manager to deal with tenant issues, maintenance, and other day-to-day tasks. We generate enough income from this rent to cover the ongoing property costs, such as mortgages, taxes, and insurance.

However, we still need your financial support for our annual fund during this time to cover maintenance, improvements, and communications costs. If you haven't already, please consider making a contribution to our annual fund via the enclosed form or on our website, www.beta-mit.org. We need your support to continue our operations and keep up our communications with all of our alumni. Thanks to all of our donors for their continued generous support!

In addition, if you are inclined to give to MIT, please make sure that you mark your gift for the Independent Residence Development Fund (IRDF—web.mit.edu/irdf). We borrow funds from the IRDF to support larger improvements for our facilities. We also receive annual operating grants from the IRDF to offset the educational portion of some of our fixed-operating costs. MIT tracks fraternity-by-fraternity contributions to the IRDF and considers that when reviewing loan and grant requests. So, the more you give, the more we can access.

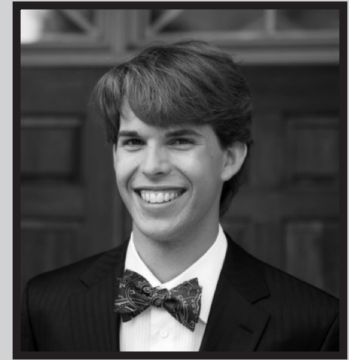
And, gifts to the IRDF are tax deductible.

Similarly, you can give to the Beta Upsilon Chapter fund at the Beta Theta Pi Foundation online (www.betathetapi.org/foundation.html). In the future, we will be applying for Designated Educational Area grants from the Beta Theta Pi Foundation to offset the educational portion of our renovations. Those will be funded through this chapter fund at the foundation. Again, contributions here are tax deductible.

Speaking of renovations, I hope you took the time to read about some of our facility plans on page two. As part of restarting the chapter, we plan to make some significant facility upgrades. Although our houses are in pretty good condition—thanks to your support—we want to be as attractive as possible as we compete for new members. We are exploring a potential capital campaign, a first in Beta Upsilon history, to raise money to fund renovations and other costs relating to restarting the chapter and securing our long-term financial stability. We have a fundraising committee, which I chair, that also includes Bob Grant '64, and Robert Harris (Kansas '81 and MIT '82). We'd welcome additional help on our fundraising committee, particularly as we move into a larger capital campaign. More details to come, but volunteers are welcome.

Yours in _kai_,
Mike Feinstein '82
573

MEET RYAN, OUR NEW COLONY DEVELOPMENT COORDINATOR



Ryan T. Gee joined the administrative office staff in June 2011. He served for one year as the leadership consultant to the Northeast region, working closely with chapters in the areas of leadership, recruitment, and adviser engagement. He will now be joining the Beta Upsilon family as our colony development coordinator (CDC) for the 2012–2013 academic year, and will spearhead the recruitment and education of undergraduate members.

A refounding father at Kettering University (formerly General Motors Institute), Gee went on to serve as two-time recruitment chairman and two-time chapter president for the newly re-established Delta Eta Colony. During Gee's tenure as chapter president, the group rechartered at the 170th General Convention and, at the 171st, the group received a Knox Award.

Gee graduated from Kettering in 2011 with two Bachelors of Science, one in mechanical engineering and the other in electrical engineering. While in school, he held leadership positions within the university's admissions and student activities offices and was employed full time at an engineering consulting firm. He also plans to pursue an MBA in the future and was admitted to Harvard Business School (HBS) in the fall of 2010. He will start his time at HBS in the fall of 2013.

Gee will be moving to Boston in June and will reside at 119 Bay State Road. Please feel free to welcome him via phone at (513) 593-7126 or by email at ryan.gee@betathetapi.org.

ANNOUNCING THE WEDDING OF THE DECADE TO THE CLASS OF 1951

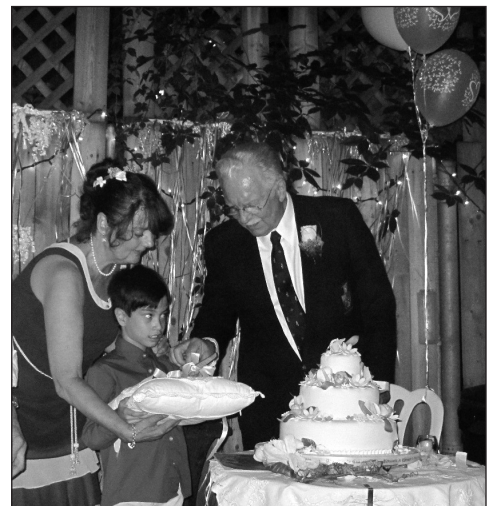
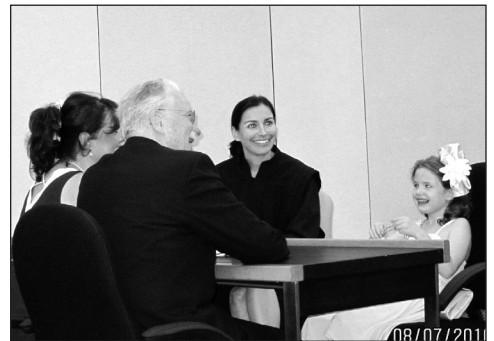
When Herbert B. “Herb” Voelcker ’51 wrote to us in January 2011, he reported, “Octogenarians gone wild! That’s what happened in Montreal on August 10, 2010, when Brother Walt Massey ’51 married Lynne Sharman Sturges-Yarnell. Walt—a lifelong thespian on the Canadian and New York stages—and Lynne, a popular talk-show personage on Canadian radio, have been companions for decades, and finally decided to tie the knot. Brother Dick Reedy ’51 with his wife, Carol, and my wife, Jean, and I were enthusiastic participants; classmate Fred Weitz, with wife, Emily, had planned to attend but was diverted by a last minute exigency. By universal agreement—best wedding of the decade!” Email Herb for more details at hbv1@cornell.edu.

Top right: The wedding portrait.

Bottom left: Rehearsal dinner, except ... there was no rehearsal! Herb Voelcker, Dick Reedy, Carol Reedy, Walt Massey, Lynne, Jean Voelcker, Wendy Reedy (Dick and Carol’s daughter) sit together.

Middle right: Newlyweds sign the marital agreements (very interesting!) in the Montreal Central Court, with the lady Justice, who married the pair (a French charmer!), and the flower girl.

Bottom right: Lynne and Walt cut the cake (no, the child belongs to neither).



STORY FROM BETA’S PAST: HOW WE ACQUIRED THE ANNEX

Have you ever wondered about how Beta Upsilon acquired the annex at 120 Bay State Road? Did you know that it had been the MIT freshman women’s dorm? That’s what it was when I moved into the Beta house in the fall of 1960. At that time, it was the home for the 12 to 15 “coeds” who made up all of the female members of the freshman class. I recently did a little research and learned that 120 Bay State Road had first been used by MIT as a women’s dorm in 1945.

In 1963, MIT finished construction of the first tower of McCormick Hall, which was designed to accommodate women of all classes. The women in the class, who entered in fall 1963, moved into McCormick, and the

old freshman women’s dorm became surplus. MIT offered the property to the MIT independent living groups for a price of \$35,000. Three living groups expressed interest: Beta, AEPi, and Student House. We saw it as a way to expand the number of members whom we would be able to house. A drawing was conducted in February 1964, and Beta won. The purchase was completed in March 1964.

Several members of my class who were staying at MIT for graduate school agreed to move into the annex for the first years since it was unlikely that the undergraduate chapter would be able to fill the additional 12 to 15 beds immediately. Jim Giffin ’64 and I moved into second-floor front, a giant empty room

with a fireplace (working, we discovered later). We built a free-standing wall to divide the living area from our bedroom, testing our structural engineering skills (I don’t remember that it ever fell down), and decorated the fireplace mantel with a large sign “Simmons College Residential Campus” (the story of how we acquired this sign will have to wait for a future issue).

Bob Grant ’64

Do you have any stories from your years as an active that you would like to share with the Beta Upsilon alumni community? If so, send your memories, stories, or musings to Victor Sinow ’08 at usinow22@gmail.com.

alumni updates

BETA UPSILON BROTHERS SHARE THEIR NEWS AND NOTES WITH US

Ira H. Lohman Jr. '38 passed away on March 13, 2010. His daughter sent us his obituary: "Ira H. Lohman Jr., engineer, photographer, pilot, and former IBM San Jose Development Lab director, died peacefully on March 13, at the Forum in Cupertino, where he had lived for more than 18 years. He was 94. Ira graduated *summa cum laude* from MIT with a degree in electrical engineering, and later obtained a master's from Washington University. During WWII, he worked for the department of the Navy briefly before being called to active duty in the U.S. Army in 1942, serving as a major with the 234th Anti-Aircraft Artillery Battalion in Assam, India. In 1951, he joined IBM in Endicott, New York, where he worked in product engineering for the B-52 guidance system. He was promoted in 1960 to manager of machine technology for the General Products Division in White Plains, New York. In 1964, he was promoted to director of IBM's development lab in San Jose, which developed hard disk drive technology. He is frequently remembered for the handmade Christmas vest he wore each Christmas when greeting employees. When Ira retired from IBM in 1979, he founded Lohman Photography with his wife, Louise. The Lohmans traveled the world taking photographs that he printed in the professional darkroom that he designed and built. Since childhood, Mr. Lohman loved flying. As an air transport rated pilot, he flew all over North America, including Alaska and Mexico. But his greatest love was for his wife and family. Ira is survived by his wife of 66 years, Louise, of Cupertino; daughter Linda Spence and her husband, Robert; daughter Judy Lohman; son Guy Lohman and his wife, Darline; daughter Dale Lohman; four grandchildren; four great-grandchildren; and 17 nephews and nieces. He is also survived by a brother, L. Maring Lohman." A celebration of his life was held at the Forum at Rancho San Antonio, in Cupertino, California, on March 27, 2010. In lieu of flowers, the family requested donations to MIT (Contact Bonny S. Kellerman '72, MIT director of Special Constituencies).

"Not much news," wrote **Donn W. Barber '42** in December 2011. "Still on my own feet. I plan to spend two weeks in Fort Myers Beach, Florida, in March. I still keep in touch with my Beta classmates

Paul Sommer '42 and **Jack Crandall '42**. Somehow, I keep busy, now it is learning how to use the iPad 2—quite a challenge." Reconnect with Donn by writing to 1207 Greenbriar Ln., West Grove, PA 19390; or by sending email to evdoba@aol.com.

Arthur A. "Art" Wasserman '51 wrote to us in 2011 and reported, "2010 was a year of sadness and transition for us. Early in the year, Sheila developed a herniated disc in her lower back that caused her severe pain in one leg, which was treated with pain medication. At about the same time, she began to exhibit some behavioral changes that suggested a neurological problem. In mid-September, a brain scan showed that she had developed a sizable, inoperable lesion on the left side of her brain. A follow-up PET scan of her body revealed a small additional lesion in her lung area. Although she stopped smoking cigarettes two or three years ago, she had been a relatively heavy smoker for many years previous. The doctors guessed that the cancers started in her lungs and then migrated to her brain. She was given radiation treatment of her head for about three weeks and then one week of chemotherapy. However, throughout that period, her weight continued to drop by several pounds per week. The doctors decided to halt the chemotherapy to see if we could build up her weight and strength before continuing, but to no avail. At that point, Sheila asked that no further treatment be attempted. She then went into a two-week period of palliative care at home, followed by two weeks of hospice care. She passed away peacefully in her sleep early in the morning on December 10, 2010. In accordance with Sheila's and my earlier funeral planning, her body was cremated. During a brief grave-side service, her ashes were buried in our plot in the veteran's area of the Wisconsin Memorial Park, a large non-denominational cemetery in Milwaukee. On January 15, 2011, we held a public memorial service at the beautiful Chapel of the Chimes at the Wisconsin Memorial Park, attended by some 200 people. They included relatives from all parts of the country and friends who knew Sheila in the many different roles she played in her life. A number of the attendees made gifts to various charities in Sheila's memory. I am slowly recovering from the loss of my beautiful bride and partner of 54 years, but I will miss her dearly for the rest of my

life. My sons, friends, and neighbors have been very kind and helpful to me. I hope to resume my legal practice in a few weeks, having had to interrupt that activity since early last summer to give full attention to Sheila's illness. I look forward to more positive developments for the entire world in the years to come." Get in touch with Art by writing to 422 E Ravine Baye Rd., Bayside, WI 53217; or by sending email to aawasserman@att.net.

"Although, officially 'retired,' I consult regularly with Spire Corporation in Bedford," writes **Ward D. Halverson '56**. "This, however, does not interfere with annual trips to France and elsewhere. All the best to the chapter!" Catch up with Ward by sending postal mail to 25 Hutchinson St., Cambridge, MA 02138; wdhalverson@aol.com.

"Being retired for almost 12 years after a 38-year career with Chevron Corporation, I contributed most of my time to the Marin Art & Garden Center and to the Ross Valley Players," reported **Alexander G. "Alex" Ross '61** in February 2012. "I serve on both boards of directors of these nonprofit organizations. My passion has always been acting in stage productions. The Ross Valley Players was founded in 1930 and is in its 82nd season of continuous operation. I have been active with them since 1971 and have performed in more than 30 major productions throughout my 40 years with them. We have successfully moved this community theater from a small local organization to a highly recognized Bay area gem-of-a-theater, which provides great entertainment and teaching for children and adults in all aspects of theatrical skills (acting, design, operations, and administration). In the past two years, I have had major roles in 'Proof,' 'Humble Boy,' 'Pride and Prejudice,' 'To Kill a Mockingbird,' and currently in 'She Stoops to Conquer.' My wife, Tinka (Wellesley '61) and I enjoy traveling and scuba diving over most of the world. As a retired astronomer, Tinka has converted me to being an avid solar eclipse chaser with her. Our best wishes for a rejuvenated Beta Theta Pi chapter. Those were great years for me." Keep in touch with Alex by writing to 89 Dominican Dr., San Rafael, CA 94901; or by email at alexross123@comcast.net.

(CONTINUED ON PAGE SIX)

alumni updates

BETA UPSILON BROTHERS SHARE THEIR NEWS AND NOTES WITH US

(CONTINUED FROM PAGE FIVE)

When **Richard L. Horttor '62** wrote to us in February 2011, he reported, “First, I corroborate **Leslie M. “Bud” Boring’s** ('64) reference to lunch in Paris in September 2010. Nice place called Julien near the St. Denis Gate. I had seen Bud at his art show in Boston in September 2009. Dorothe and I were en route to Chalon sur Soanes for a trip down the Soanes and Rhones Rivers to Arles ending at Avignon—terrific, highly recommended! We had earlier taken another Alaska trip from Vancouver to Seward, flown up to Prudhoe Bay and a bus trip along the Dalton Highway, 500 miles of dirt and gravel back to Fairbanks, then a train to Denali Park and Anchorage. A terrific experience, but I saw no other Betas along the way. We also took a cruise on the Western Mediterranean, and closed out the year with an Antwerp-to-Basel river trip up the Rhine—truly wonderful. No Betas along there either (at least, not that I knew about). In the previous *Back Bay Beta* issue, I recognized **Allan MacLaren '60** and **Richard H. “Dick” Oeler '60**. But, **Gerry Hurst '60** and **Calvin Koonce '60** did not look like I remembered them—then again, I probably look different, too.

I am really looking forward to our 50th Reunion in 2012. I get to Boston fairly regularly, and always see Ann and **Mead Wyman '62** when I'm there.” Richard sent an update on April 25, 2012, that reported, “It is hard to believe that my 50th anniversary of graduating from MIT is all but here (June 8). Most of our pledge class will be present at some time during the week, or a day or so later. Most are going to the pre-event in Salem, Massachusetts. And all, I think, will be at **Meade Wyman's** place on Martha's Vineyard the following week. MIT was a huge part of my life and the Betas were a major part of that time. Still today, members of our pledge class are best friends.” Keep in touch with Richard at 1270 Lida St., Pasadena, CA 91103; rndhorttor@earthlink.net.

Stevan Jovanovich '73 is president and CEO of IntegenX, a company he co-founded in 2003. They sell products for NextGen sequencing, as well as DNA and RNA stabilization, and they will soon be selling products for rapid human identification. Stevan and his wife, Sue, married six years ago and have four kids ranging from age 22 to 31. He reports that life is busy, but good. Stay in touch

with him at 723 Hazel St., Livermore, CA 94550.

Michael P. “Spike” McGovern '89 recently had the pleasure of dining with **Christopher J. “Orgs” Morgen '87** and his lovely wife and children during the Morgens' visit to Ponte Vedro Beach, Florida. He enjoyed seeing the gang for Euchre tournament 2011 in New Orleans in November at Hotel St. Marie. “Thanks to Tex for his great administration.” Mike hopes to see more Betas in 2012! Write to “Spike” at 9585 Sugar Hollow Ln., Jax, Florida 32256; or send email to m_mcgov@bellsouth.net.

Dylan Hirsch-Shell '03 is a firmware test engineer for Tesla Motors. Contact him via his new postal address at 1900 California St., Apt. 10, Mountain View, CA 94040.

DECEASED

We regret to announce the deaths of:

Norman C. Bedford '38
May 8, 2011

Ira H. Lohman Jr. '38
March 13, 2010

Edward M. Gardiner '41
May 20, 2011

Franklin Hawkins '41
February 19, 2012

William H. Brett III '47
January 25, 2012

Lawrence E. Root '50
August 23, 2011

George T. Marcou '53
May 12, 2011

Ronald L. McKay '54
December 8, 2011

Raymond L. Shearer '54
December 7, 2011

Gordon R. Lohman '55
December 24, 2011

Brian Anderson '13
February 20, 2012

VISIT US ON THE WEB!

..... www.beta-mit.org

As our efforts to restart our chapter are in full force, what better time to visit our website and update your information!

Let us know what you've been up to, check out upcoming events at the chapter, and look through photos from past and present events.

Feel free to email us at alumnirecords@beta-mit.org with photos or news items you wish to see on the site or in the next issue of the *Back Bay Beta*.

HELP IGNITE THE RESTART OF BETA UPSILON CHAPTER AT MIT!