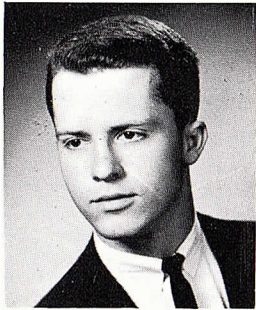


Beta Theta Pi



Beta Theta Pi

*Come smoke a friendly
pipe with me . . .*



Dear Freshman,

By this time you are probably wading through the deluge of rushing material from nearly every fraternity at M.I.T. Tiresome as reading through all this literature may be, I'm sure you realize that a thorough and critical study of each rush pamphlet is a very important first step toward choosing the right fraternity in September.

In reading this pamphlet, it should soon become evident to you why we of Beta are proud of our record at M.I.T. This pride stems from a healthy respect for Beta accomplishments and successes that exists both on the M.I.T. campus and throughout the Fraternity's national organization.

Collecting achievements, however, is not the only facet of life at M.I.T. or anywhere for that matter. Thus, in the process of working together for such a top record we feel our fraternity at the same time builds strong and enduring bonds of friendship. Brotherhood at Beta means many things in terms of good fellowship and mutual understanding, but most important it means just having a good time together in those all-important hours of respite from our work. This sense of Beta brotherhood is hard to capture in the printed word, but I think a hint of its spirit will reach you through the pages of this pamphlet.

One final note: You've made an excellent choice of a school; now you owe it to yourself to be just as careful and selective in your choice of living groups.

Sincerely,
Jerry Burnett
President

The tutors made us grub and dig



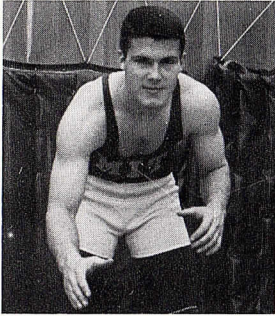
Beta Theta Pi wins Scholarship Cup second straight year.

Every fraternity at M.I.T. talks of scholarship as its first goal. Yet no other fraternity can point to the record of excellence which Beta Theta Pi has achieved. The scholarship cup has entered the halls of Beta five times in the last nine years and in both of the last two years — a record unequalled in the history of M.I.T. The question you should ask is, Who is first at present? Although the results for 1962-63 are not tabulated until late August, our first term 4.0 house average, *0.2 higher than the next living group, fraternity or dormitory* — puts us well on the way to a third year in a row in first place. As a result of our Dean's List house average last year, we were honored by the National Interfraternity Conference with a scholastic rating of "Summa Cum Laude," recognizing us as *one of the top five chapters in the National I. F. C.*

We both know that learning is something very individual, but a house can help by a mature overall attitude toward scholarship. It can also set an example through scholastic achievements of its members, but the most effective part of our program is the *personal interest* shown by each Beta to the young men entering the halls of Beta Theta Pi. A brother will go to almost any extreme to show a fellow Beta the correct path to follow. Our scholarship program includes emphasis on enforced study conditions every school night and Sunday; a complete file of examinations, themes, and labs from previous years, an upperclassman in every freshman room, and special reviews given to freshmen before each exam. As a result of this effort more than half the brothers receive scholarship aid, including grants from National Merit, General Motors, and the Sloan Foundation.

Of course, school work is by no means the only part of the total education that M.I.T. and Boston have to offer. Indeed, living with thirty-five other men, each with his own unique viewpoint, is an education in itself.

*Long beam our diamond
and bright shine our stars . . .*



Tom Gerrity: Tau Beta Pi, Dean's List, M.I.T. Athletic Association Vice President, Q-Club, Beaver Key, Wrestling Team Captain, Chapter President, Eastern Collegiate Athletic Conference Award.

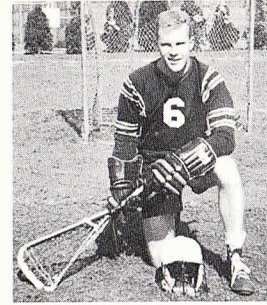
Bud Boring: Q-Club, Beaver Key, Varsity Coxswain of the Heavyweight Crew.



Bill Roeseler: Dean's List, M.I.T. Concert Band, Wrestling, Varsity Lacrosse, Beaver Key Treasurer, Chapter House-Manager and Chorister.

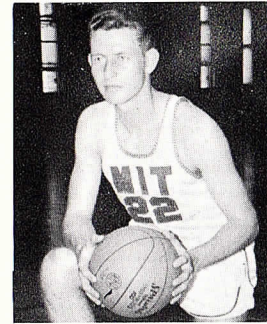


Bob Macdonald: Dean's List, Freshman Council, Hockey and Lacrosse.

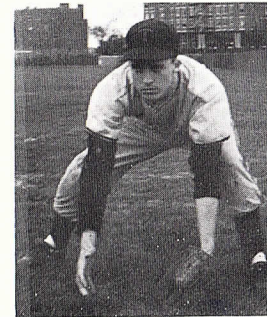


Mike Monsler: Dean's List, Q-Club, Beaver Key, Captain Freshman Hockey, Varsity Lacrosse, Aero Engineering Honorary.

Kent Groninger: Dean's List, Q-Club, Beaver Key, Freshman Athlete of the Year, Baseball, Basketball Captain, Chapter House-Manager and Vice President, Greater Boston League All Stars (Basketball), Civil Engineering Honorary.



Jerry Burnett: Dean's List, Diving, Baseball, Chairman of Student Committee on Educational Policy, Institute Committee, Beaver Key, Present House President.



Dick Nygren: Dean's List, Freshman Wrestling, Lacrosse, Q-Club, House Athletic Chairman.



We have purposely left out accomplishments which would be meaningless to an incoming freshman. Only two clarifications are necessary. Q-Club and Beaver Key are, respectfully, the sophomore and junior honorary societies at M.I.T.

The sons of the dragon . . .



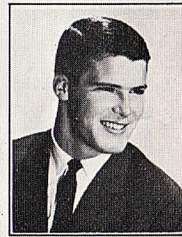
THOMAS M. SHERIFF



PLEDGE TRAINER
RICHARD M. HARRIS



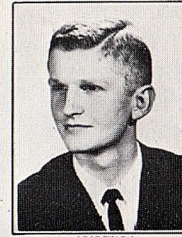
VICE PRESIDENT
DALE E. MILLER



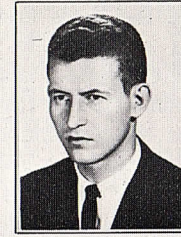
PRESIDENT
THOMAS P. GERRITY



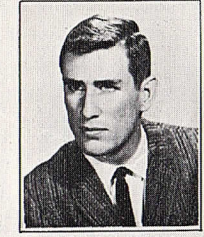
TREASURER
RICHARD A. CARPENTER



SECRETARY
ROBERT A. GRANT



KENT L. GRONINGER



HAROLD O. BRANSON



ARMAND R. CHINCHILLO



MICHAEL J. MONSLER

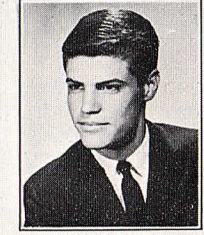
Beta Theta Pi

19  63

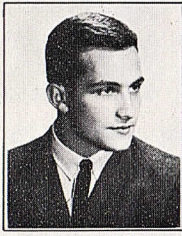
M. I. T.



GERALD J. BURNETT



STEPHEN C. ALDRICH



FRED L. LUCONI



LESLIE M. BORING



MICHAEL W. LARDNER



WILLIAM A. SCHEFTNER



JON E. BURKHARDT



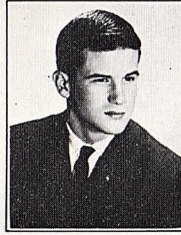
JAMES W. GIFFIN



JOHN P. COGGESHALL



JARROD W. WILCOX



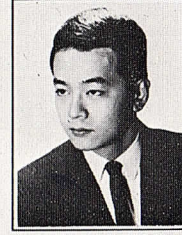
STANLEY A. BROWN



TERRY E. RILEY



WILLIAM G. ROESELER



RICHARD W. TSIENTS



DONALD H. FREDRICKSON



JOHN J. ELDER



ROBERT L. MAC DONALD



ROBERT P. O'DONNELL



KIM D. COLLINS



LAWRENCE A. KING



TERRY J. VANDER WERFF



PETER D. KIRKWOOD



RICHARD E. NYGREN

*Following paths old wooglin
blazed for us . . .*



Dick Carpenter, active participant in Student Government addresses the Institute Committee.

We have mentioned the achievements of Betas, both as individuals and as a group, with a purpose: to show our belief that a fraternity must have both to be strong. Not every Beta is a combination of athlete, scholar, and statesman; however, each man does seem to have the drive to excell in many ways not only in his studies or athletics but in student government and literary or musical activities as well.

Of course, all these endeavors do not cover the whole experience of coming to M.I.T. or Beta Theta Pi. Yet the statement, "A person of genuine merit is indeed the most enjoyable company," seems true here. Living with men who have earned respect — enjoying activities from bull-sessions to a climbing expedition on Mt. Liberty to just singing together out on the front steps . . . this is all part of being a Beta.



*Strong in the might of our
bond fraternal . . .*

In the preceding pages you have a glimpse of the Beta Upsilon Chapter of Beta Theta Pi, but you are no doubt interested in Beta Theta Pi itself. Beta Theta Pi, being the first fraternity founded in the West in 1839, has continued in the tradition of a pioneering fraternity. Beta Theta Pi recognized early the importance of a national outlook. This is clearly evidenced by the fact that Beta Theta Pi was the first fraternity on 37 campuses throughout the country. The Fraternity, however, has never allowed itself to become weak through unchecked expansion. It does not have chapters at every college or university. Of the many groups that petition for admission to Beta Theta Pi, very few are granted charters.

A recent study of Who's Who in America revealed the names of over 1000 Betas recorded in its pages, a total of 80 more than the second leading fraternity and 250 more than the third. This situation prompted a nationally read newspaper columnist to remark recently, "You have to be a doctor, a lawyer, or a member of Beta Theta Pi to get into Who's Who."

Beta Theta Pi has the oldest national fraternity magazine in continuous existence; it was the first fraternity to be recognized by a college or university; it was a charter member of the National Interfraternity Council, which was founded by a Beta; and it has been able to report all dues received, all bills paid, and a balance in the treasury for over 50 years (a record not even remotely equalled by any other fraternity). It is the only one of the older fraternities that has been above the all-men's average for the years in which the National Interfraternity Council figures have been computed, and has rated first in this list for 30 of the past 32 years.

The national position of the Fraternity may be estimated by such remarks as were made about Beta Theta Pi in Time, Life and other national magazines in connection with the late Wendell Willkie. These publications named his fraternity, Beta Theta Pi, as the "nation's number one college fraternity."

All of this has created a national respect for Beta Theta Pi which is both a point of pride to the men who wear the badge and a tribute to the careful selection of those who will uphold the standards of the Fraternity.

We're coming from the east boys,

We're coming from the west . . .

Steve Aldrich	'63	Course I	Fort Worth, Texas
Bud Boring	'64	Course XVI	Quanah, Texas
Harold Branson	'63	Course XV	Muskogee, Oklahoma
Stan Brown	'65	Course VI	Concord, Massachusetts
Jon Burkhardt	'64	Course IV-A	Muncie, Indiana
Jerry Burnett	'64	Course VI	Sacramento, California
Dick Carpenter	'64	Course VI-2	Mohawk, New York
Bob Chinchillo	'64	Course VI-A	Revere, Massachusetts
John Coggeshall	'66	Course X	Washington, D. C.
Jack Elder	'66	Course III	Huntington, New York
Don Fredrickson	'65	Course VI-2	Tacoma, Washington
Tom Gerrity	'63	Course VI-2	Washington, D. C.
Jim Giffin	'64	Course VI-2	Wadsworth, Ohio
Bob Grant	'64	Course VI	South Bend, Indiana
Kent Groninger	'63	Course I	Akron, Indiana
Mike Harris	'63	Course VI	Los Alamitos, California
Larry King	'66	Course XIV	Los Angeles, California
Pete Kirkwood	'66	Course XVI	Cleveland, Ohio
Mike Lardner	'64	Course IV-A	Kirkwood, Missouri
Fred Luconi	'64	Course VI-2	Hammond, Indiana
Bob Macdonald	'66	Course XVI	East Grand Rapids, Michigan
Dale Miller	'63	Course VI	South Gate, California
Mike Monsler	'64	Course XVI	Elkhorn, Wisconsin
Dick Nygren	'66	Course VIII	Mercer Island, Washington
Bob O'Donnell	'66	Course XVIII	Milwaukee, Wisconsin
Dave Penny	'66	Course II	Emporia, Kansas
Terry Riley	'65	Course VI	Norfolk, Virginia
Bill Roeseler	'65	Course XVI	Racine, Wisconsin
Jay Rogers	'65	Course VIII	Fort Lauderdale, Florida
Mike Sheriff	'63	Course XIV	Tulsa, Oklahoma
Dick Tsien	'65	Course VI-2	Livingston, New Jersey
Terry VanderWerff	'66	Course II	Lansing, Illinois
Jerry Wilcox	'65	Course XV	Phoenix, Arizona

Beta Theta Pi

Massachusetts Institute of Technology
119 Bay State Road
Boston 15, Massachusetts